

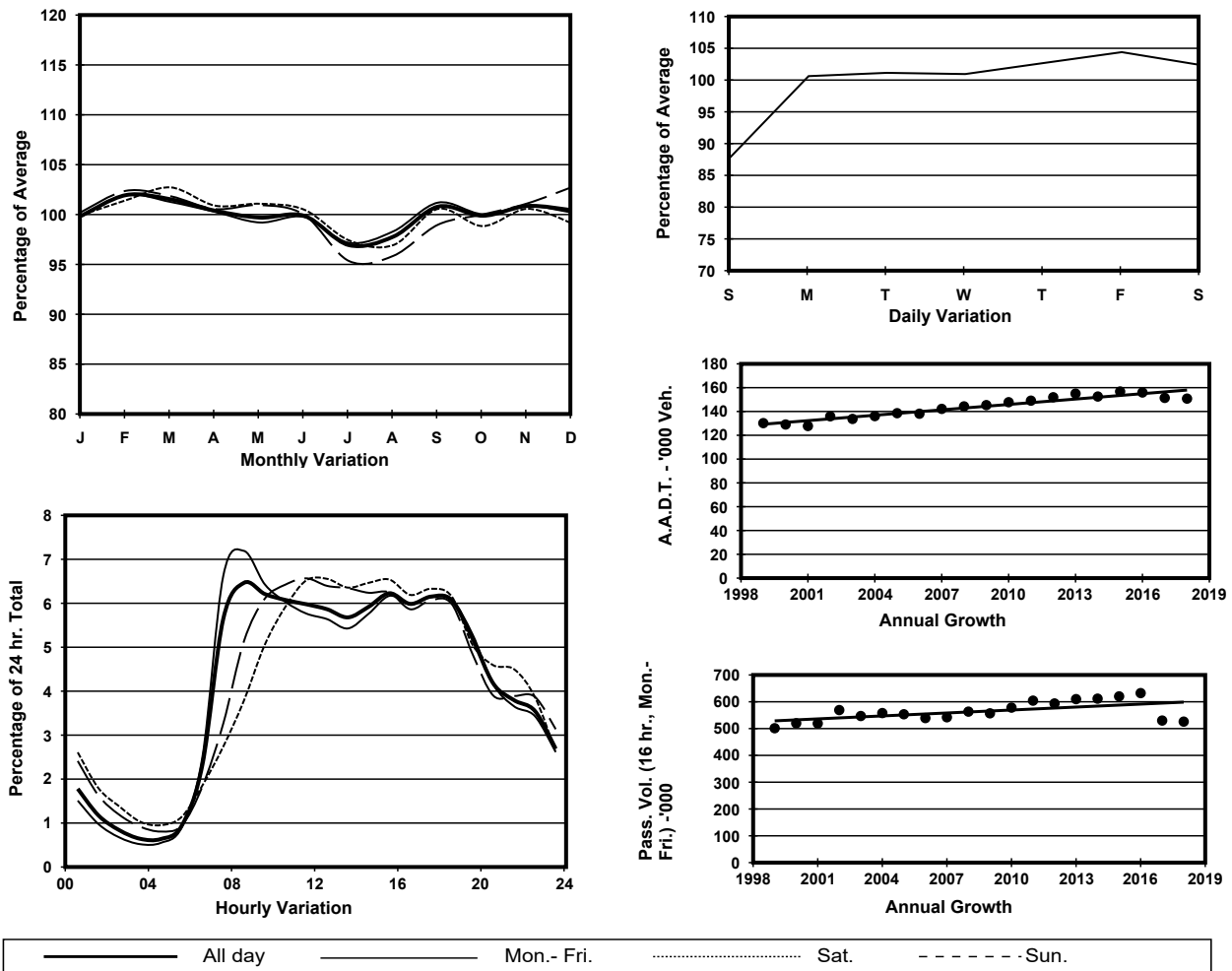
YEAR 2018

Location Hong Kong External Cordon(Boundary between the Northern Part and Southern Part of Hong Kong Island)

Stations on Cordon/Screenline

1004, 1021, 2201, 2202, 2206, 2401 and 2407

1. TRAFFIC FLOW VARIATION AND GROWTH



2. TRAFFIC CHARACTERISTICS (BY DIRECTION)

Parameter	All - Day	Mon. - Fri.	Sat.	Sun.
SOUTH BOUND				
A.A.D.T.	75350	77450	76520	67080
R 12 / 24 - %	70.7	71.6	69.4	67.4
R 16 / 24 - %	88.5	89.3	86.6	86.2
AM Peak Hour	0900-1000	0800-0900	0900-1000	0900-1000
One-way flow at AM peak hour	4670	5140	4630	3340
T - % (AM)	-	9.8	-	-
PM Peak Hour	1600-1700	1800-1900	1600-1700	1600-1700
One-way flow at PM peak hour	4420	4680	4470	4190
T - % (PM)	-	5.9	-	-
Prop.of commercial vehicles - 16 hr.	-	9.2	-	-
NORTH BOUND				
A.A.D.T.	75450	77280	78870	66390
R 12 / 24 - %	73.8	74.9	71.9	69.8
R 16 / 24 - %	89.4	90.2	87.6	87.1
AM Peak Hour	0800-0900	0800-0900	0900-1000	0900-1000
One-way flow at AM peak hour	5180	5990	4860	3410
T - % (AM)	-	8.1	-	-
PM Peak Hour	1700-1800	1700-1800	1800-1900	1700-1800
One-way flow at PM peak hour	5000	5110	5240	4580
T - % (PM)	-	10.4	-	-
Prop.of commercial vehicles - 16 hr.	-	9.7	-	-

3. OTHER INFORMATION AND COMMENT

Hong Kong External Cordon Year 2018

4. Vehicle classification and occupancy - Monday to Friday

Time		Class of vehicle									
		Motor Cycle	Private Car	Taxi	Private LB	PLB	Goods veh.		Non Fr. Bus	Fr. Bus	
							Light	M & H		SD	DD
0700-0800	Pro	3.7	41.3	22.9	4.4	4.7	8.4	2.0	7.7	0.1	4.7
	Ocp	1.1	1.4	2.1	8.5	13.6	1.5	1.5	22.4	30.5	46.8
0800-0900 Peak Hour	Pro	2.7	55.7	17.5	1.6	4.4	9.2	1.7	3.5	0.1	3.5
	Ocp	1.1	1.4	2.1	4.7	13.9	1.7	1.4	13.4	20.7	48.3
0900-1000	Pro	2.1	47.3	21.7	1.2	3.2	16.1	2.4	2.3	0.1	3.6
	Ocp	1.1	1.4	2.1	2.7	13.5	1.5	1.4	19.4	11.6	29.9
1000-1100	Pro	2.6	42.8	20.7	1.1	3.5	19.8	3.5	2.0	0.1	3.8
	Ocp	1.1	1.4	2.1	3.5	12.7	1.6	1.3	13.5	13.2	23.0
1100-1200	Pro	2.4	44.0	19.7	2.0	3.5	17.7	3.0	3.9	0.1	3.7
	Ocp	1.1	1.3	2.1	3.2	11.8	1.4	1.3	14.1	8.2	23.2
1200-1300	Pro	2.1	47.6	17.1	2.4	3.4	16.4	3.0	4.4	0.1	3.5
	Ocp	1.1	1.6	2.2	4.1	12.0	1.5	1.5	15.7	7.4	26.4
1300-1400	Pro	2.3	41.3	21.6	1.3	4.4	18.2	2.8	4.3	0.1	3.7
	Ocp	1.1	1.4	2.1	1.5	11.4	1.6	1.2	14.7	7.2	25.5
1400-1500	Pro	2.2	44.2	20.7	2.1	3.3	18.3	2.1	3.7	0.1	3.4
	Ocp	1.1	1.4	2.0	3.9	12.3	1.6	1.3	14.1	10.0	23.9
1500-1600	Pro	2.2	49.0	18.4	2.5	3.7	15.1	1.5	4.0	0.1	3.4
	Ocp	1.1	1.4	2.1	6.9	10.3	1.5	1.2	19.4	15.6	25.8
1600-1700	Pro	2.7	48.3	18.7	2.2	4.3	14.1	0.9	5.0	0.1	3.7
	Ocp	1.0	1.5	2.1	4.1	12.4	1.6	1.6	15.0	15.0	27.2
1700-1800	Pro	4.5	50.1	20.0	1.2	4.0	10.6	1.6	4.2	0.1	3.8
	Ocp	1.0	1.5	2.2	3.3	12.6	1.5	1.4	14.2	20.5	38.6
1800-1900	Pro	4.4	54.2	22.9	0.7	4.3	5.6	0.5	3.4	0.1	3.9
	Ocp	1.1	1.4	2.1	4.9	14.7	1.4	1.4	23.9	18.2	48.0
1900-2000	Pro	2.4	56.0	26.2	0.3	3.5	4.6	0.8	2.1	0.1	4.1
	Ocp	1.0	1.3	2.0	2.9	13.8	1.6	1.2	14.1	10.5	33.4
2000-2100	Pro	2.7	48.6	32.5	0.2	4.0	4.0	1.0	1.7	0.1	5.2
	Ocp	1.2	1.4	1.9	1.7	10.8	1.5	1.3	10.9	4.2	20.3
2100-2200	Pro	4.2	45.4	36.1	0.2	4.3	2.4	0.7	1.4	0.1	5.3
	Ocp	1.1	1.5	1.9	4.5	9.6	1.3	1.8	8.8	4.8	22.7
2200-2300	Pro	4.0	45.6	36.5	0.0	4.8	2.6	0.7	0.6	0.1	5.1
	Ocp	1.1	1.4	1.9	0.0	9.1	1.6	1.4	5.8	5.0	22.5
16 hours	Pro	2.9	47.7	22.4	1.6	3.9	12.0	1.8	3.6	0.1	3.9
	Ocp	1.1	1.4	2.1	5.0	12.4	1.5	1.4	16.7	13.8	31.3

Legend

Pro. Proportion of vehicles in % (Sum may not add up to 100% due to figure rounding)*

Ocp. Average occupancy of vehicles including both driver and passengers*

M&H Medium and Heavy

***** All traffic data are collected from combined bounds except for one way traffic